

# ABORTION ACCESS in LOUISIANA

Since this research was published in 2015, two of the five Louisiana clinics have closed, leaving only three abortion clinics in this state.

The updated data below summarize how far women have to travel now and if one, two, or all three remaining clinics close as a result of the Admitting Privileges law.

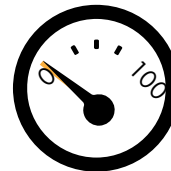
2018



**MORE WOMEN WILL**  
 need to **TRAVEL** over **150 MILES**

Currently,

**1%** of Louisiana women must travel over 150 miles for an abortion

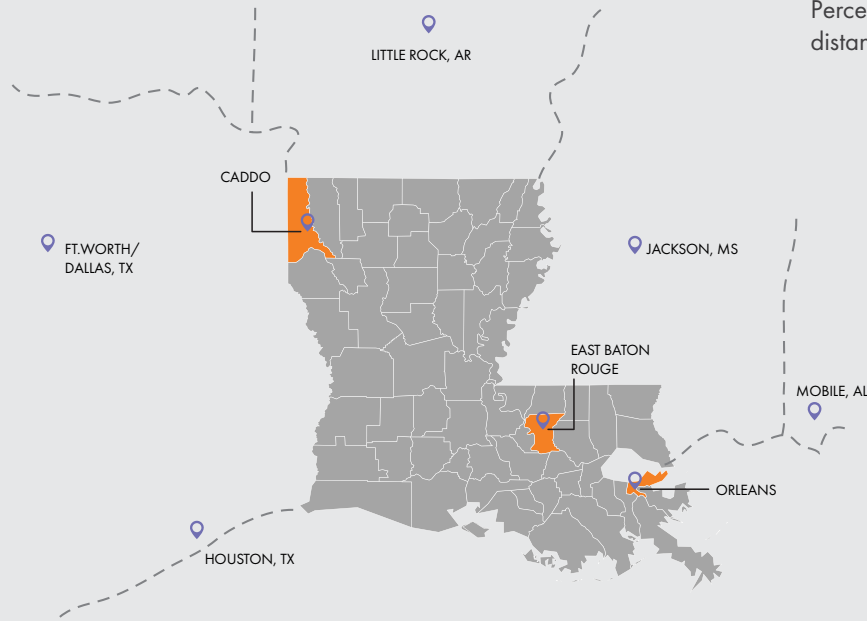


If all 3 clinics close,

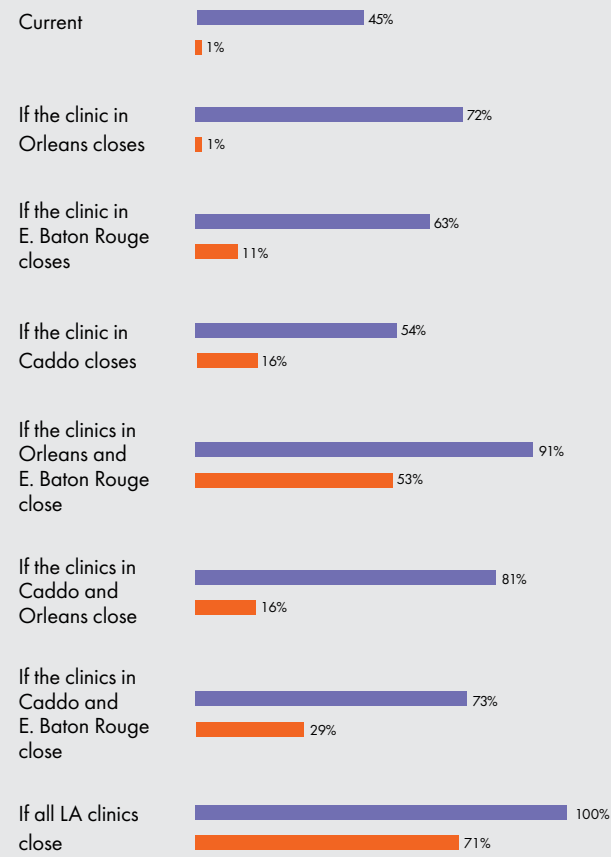
**71%** of Louisiana women will have to travel over 150 miles for an abortion



Roberts, S. C., Fuentes, L., Kriz, R., Williams, V., & Upadhyay, U. D. (2015). Implications for women of Louisiana's law requiring abortion providers to have hospital admitting privileges. *Contraception*, 91(5), 368-372. More information available at [ansirh.org](http://ansirh.org).



Percentage of Louisiana women of reproductive age living specified distances away from the nearest abortion clinic as of December 2018



**IF ALL THREE LOUISIANA CLINICS CLOSE, 71% of WOMEN will be OVER 150 MILES AWAY from the NEAREST ABORTION CLINIC, and 100% will be OVER 50 MILES AWAY.**

